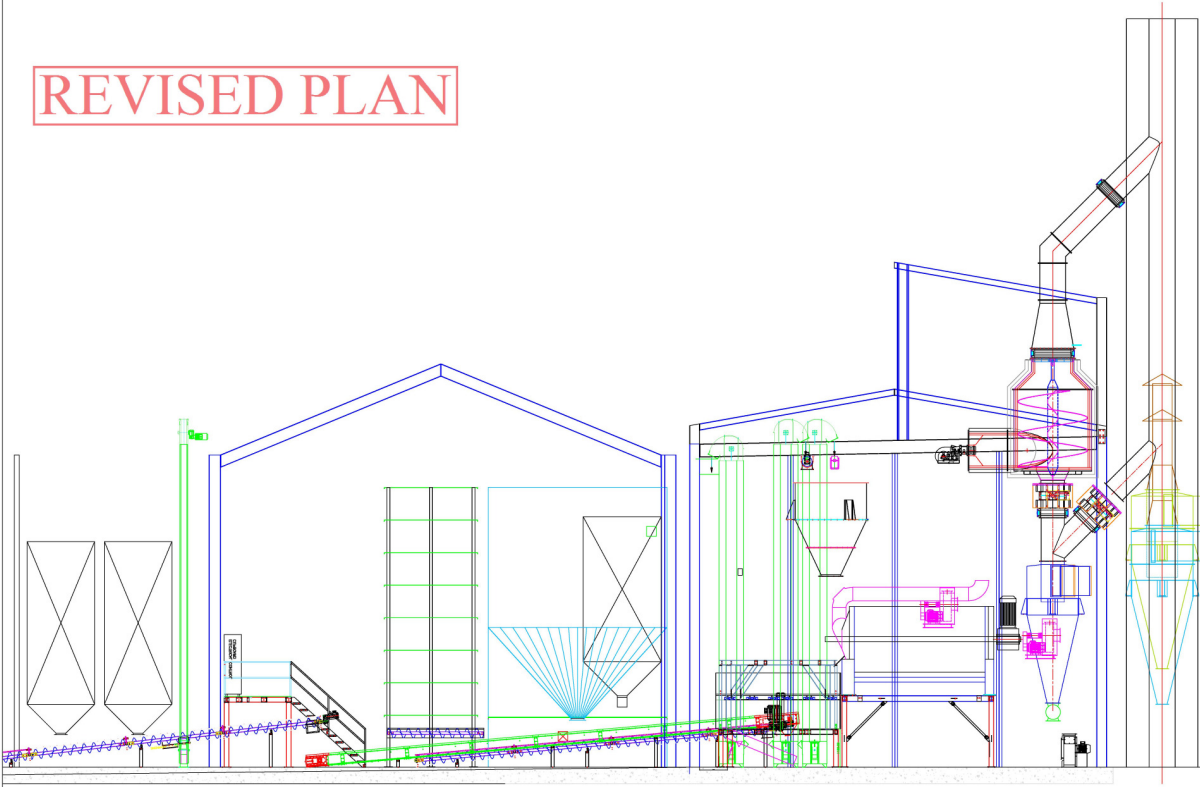


IF IN DOUBT ASK.

REVISED PLAN



DATE
10/08/15

| WPLT | ALLOY | WPLT | PREP |
|----------------------------|-------|------|------|
| GREEN DMS - MILD STEEL | 304 | 304 | 304 |
| BLUE DMS - STAINLESS STEEL | 304 | 304 | 304 |
| PURPLE DMS - ALUMINUM | 304 | 304 | 304 |

SHIELDS

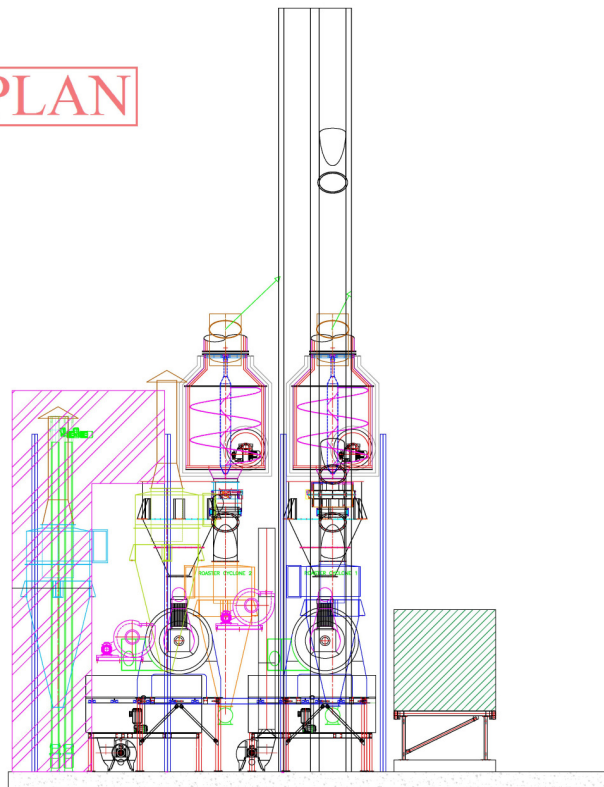
USE IT FROM THE
MATERIALS LISTED
ON THE DRAWING
FOR THE PROJECT

This drawing is the exclusive property of Shields Industrial Ltd. and is CONFIDENTIAL. It may be used only for the purposes for which it has been supplied. It may not be used for other or similar projects without our written consent. It remains our property and must be returned to us upon completion of the project.

| BOORTMALT | | | |
|--------------------------------------|----------|------------|----------------|
| ROASTER PROJECT SIDE VIEW NO DUCTING | | | |
| Job No. | Drawn By | Date | Execution Date |
| 10/08/15 | CS | 07/08/2015 | |
| Drawn No. | | | Rev |

IF IN DOUBT ASK.

REVISED PLAN



DATE
10/08/15

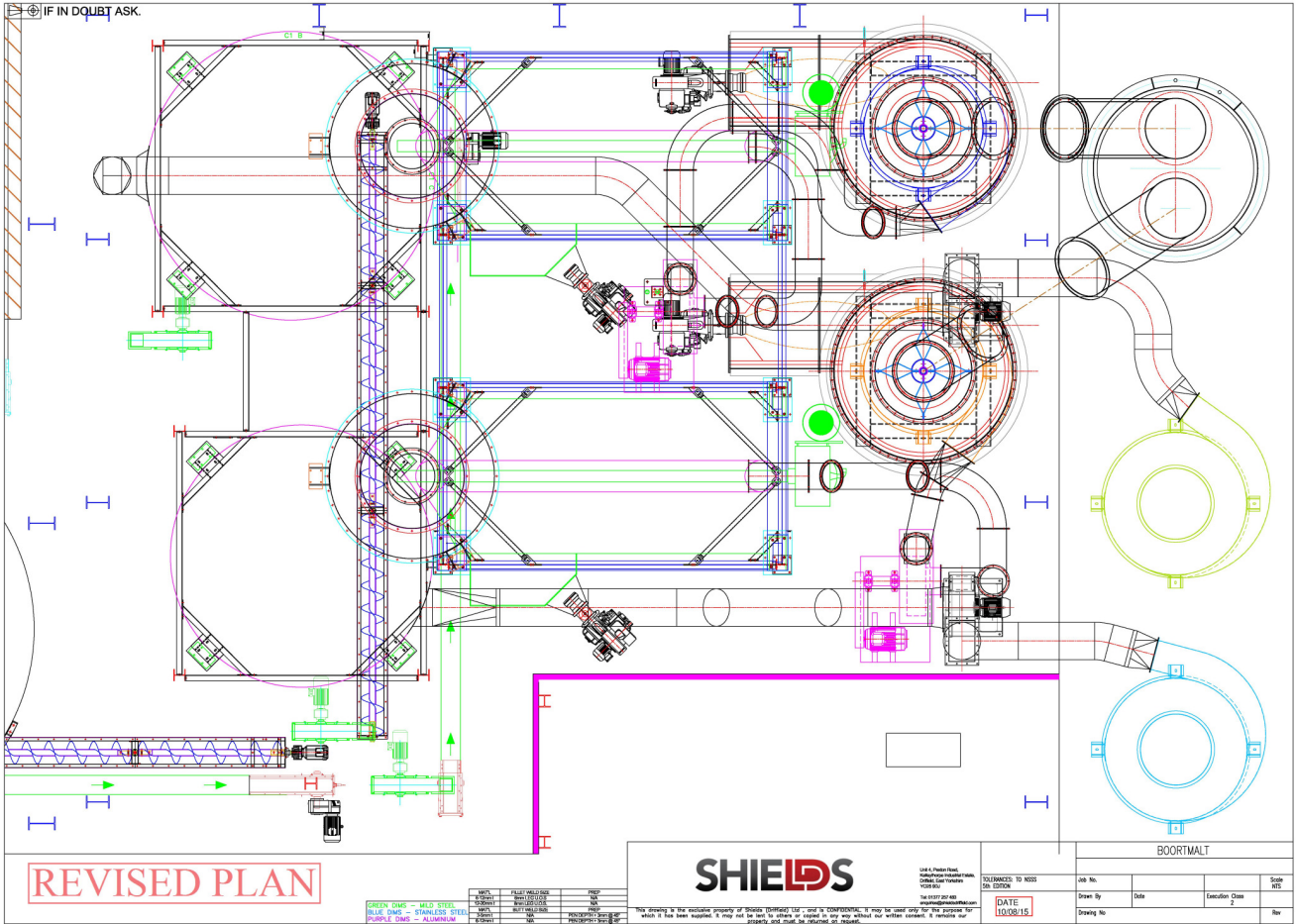
| MATERIAL | FINISH/TREATMENT | PREP |
|----------------------------|------------------|------|
| GREEN DMS - MILD STEEL | 304 | 304 |
| BLUE DMS - STAINLESS STEEL | 304 | 304 |
| PURPLE DMS - ALUMINUM | 304 | 304 |

SHIELDS

USE IT FROM THE
MANUFACTURER'S INSTRUCTIONS
OR
CALL US
1-800-368-5663
www.shieldsusa.com

This drawing is the exclusive property of Shields Industrial Ltd. and is CONFIDENTIAL. It may be used only for the purpose for which it has been supplied. It may not be used, modified or copied in any way without our written consent. It remains our property and must be returned to us.

| BOORTMALT | | | |
|-------------------------------------|------------|----------------|-------|
| ROASTER PROJECT END VIEW NO DUCTING | | | |
| Job No. | Date | Execution Date | Scale |
| 10/08/15 | 07/08/2015 | | 1:1 |
| Drawn By | CS | | Rev |
| Checked By | | | |



REVISED PLAN

| NO. | DATE | BY | DESCRIPTION |
|-----|------|----|-------------------------|
| 1 | | | ISSUED FOR PERMIT |
| 2 | | | ISSUED FOR CONSTRUCTION |
| 3 | | | ISSUED FOR CONSTRUCTION |
| 4 | | | ISSUED FOR CONSTRUCTION |
| 5 | | | ISSUED FOR CONSTRUCTION |
| 6 | | | ISSUED FOR CONSTRUCTION |
| 7 | | | ISSUED FOR CONSTRUCTION |
| 8 | | | ISSUED FOR CONSTRUCTION |
| 9 | | | ISSUED FOR CONSTRUCTION |
| 10 | | | ISSUED FOR CONSTRUCTION |

SHIELDS

USE IT PROPERLY!
 SHIELDS IS NOT RESPONSIBLE FOR
 ANY DAMAGE TO PROPERTY OR PERSONS
 ARISING FROM THE USE OF THIS DRAWING
 WITHOUT OUR WRITTEN CONSENT.

DATE: 10/28/15

| Job No. | Date | Execution Date | Scale |
|---------|------|----------------|-------|
| | | 2 | MS |

BOORTMALT

This drawing is the exclusive property of Shields Industrial Ltd. and is CONFIDENTIAL. It may be used only for the purpose for which it has been supplied. It may not be used, in whole or in part, for any other project, and must be returned to Shields Industrial Ltd. upon request.